



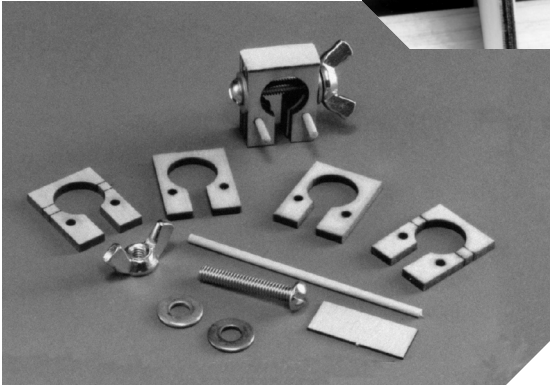
MODEL SHIPWAYS
• QUALITY KITS SINCE 1946 •

A Division of Model Expo • Hollywood, FL 33020

Hull Planking Clamps

MX103/104 Assembly Instructions

Design and laser work by Bob Bruetsch



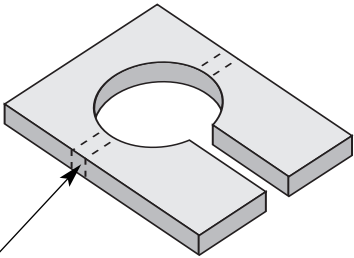
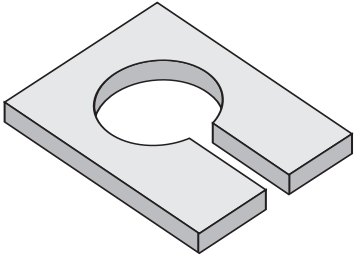
HULL PLANKING CLAMPS ASSEMBLY INSTRUCTIONS MX103/104

- 1) Before removing the four basswood sections from each of the six carrier pieces, note that two of the sections have additional scoring on each side of the large hole. This will create a channel into which you'll slide a bolt. Glue these two sections together first and then remove the scored area with a sharp knife. This will keep the sections aligned.
- 2) Next, glue one of the remaining sections on the top and the other on the bottom of the assembly you have created in step one. Again, make sure that everything is square.
- 3) When dry, add the plywood backing as shown in the illustrations and carefully insert the bolt, washers and wing nut.
- 4) Cut the brass rods into one inch lengths and insert one piece into each hole at the tip of the clamp. Add a drop of glue to secure the rod.
- 5) To use the clamp, slide the jaws over a bulkhead and tighten the wing nut (do not over tighten). Slide a plank behind the brass rods and simply push the clamp upward slightly so that the rods hold the plank tightly in position.

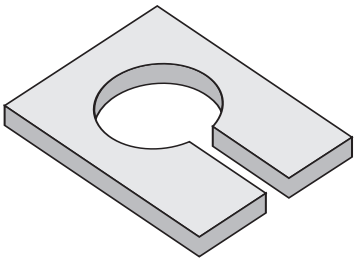
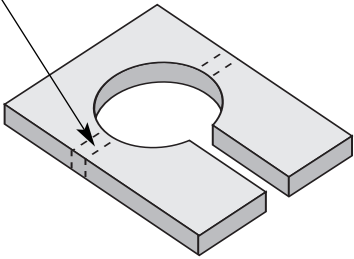
See reverse for illustrations.

© Copyright 2006

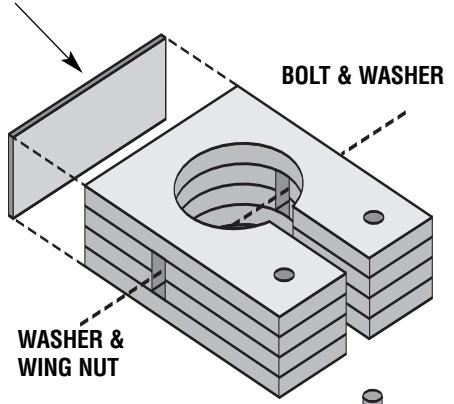
GLUE ALL 4 SECTIONS TOGETHER



REMOVE THIS AREA AFTER SECTIONS HAVE BEEN GLUED TOGETHER



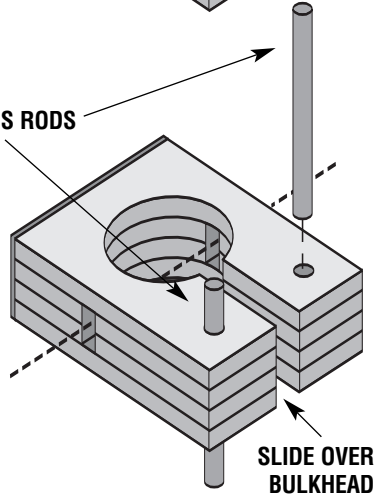
1/32" PLYWOOD BACKING



BOLT & WASHER

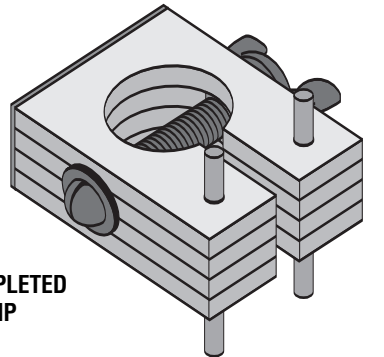
WASHER & WING NUT

BRASS RODS



SLIDE OVER BULKHEAD

COMPLETED CLAMP



MX103/104